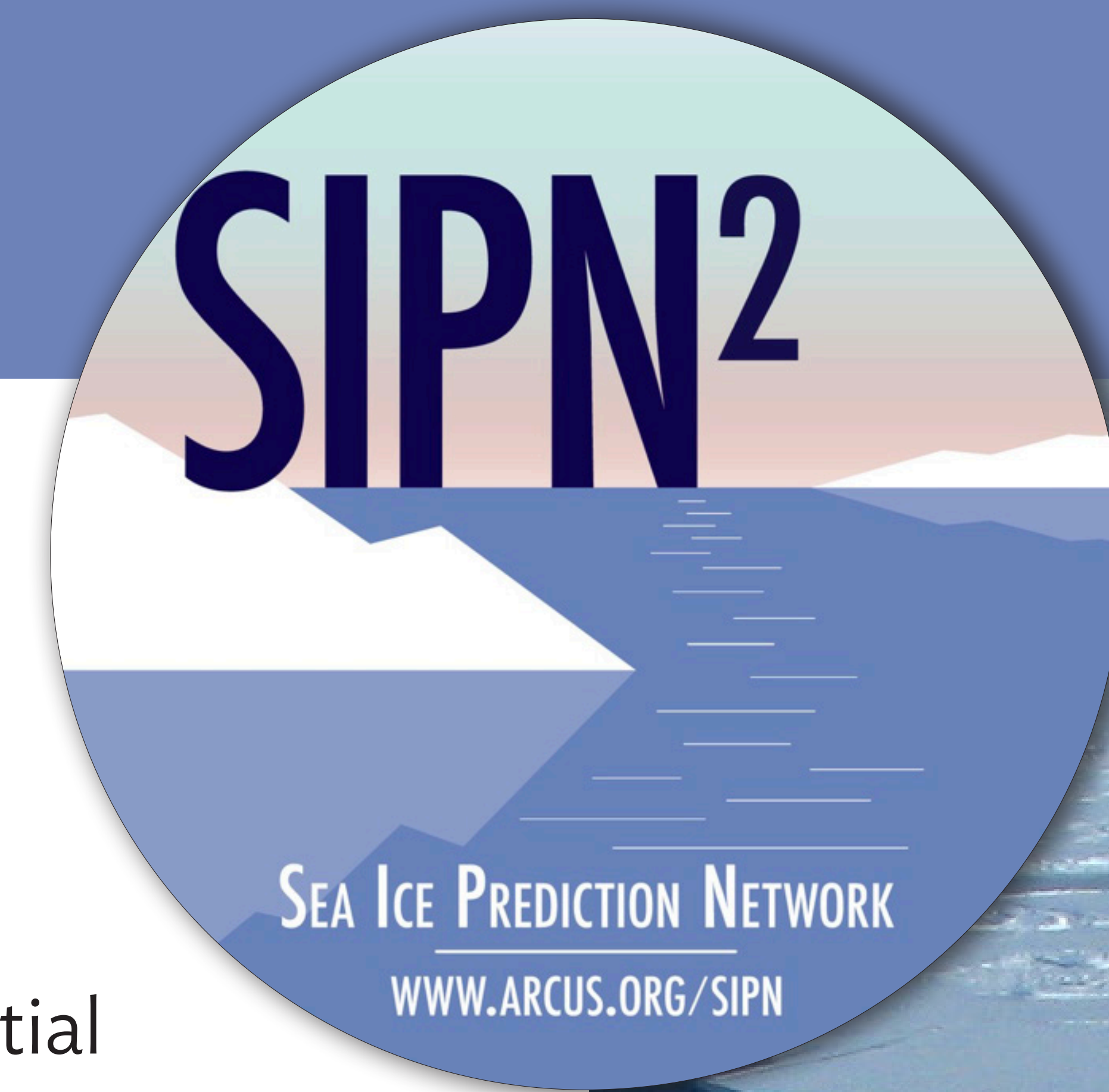


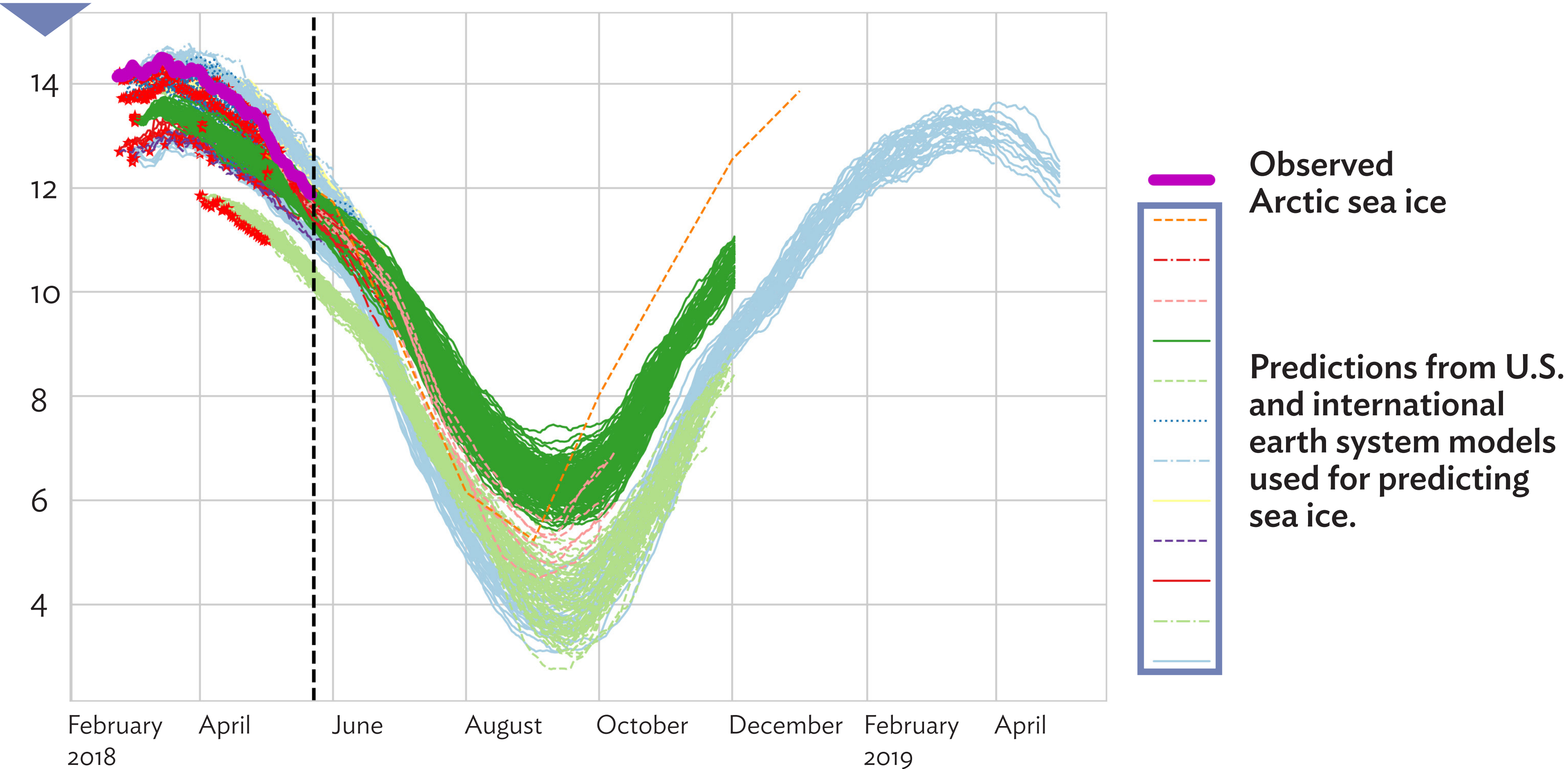
# SEASONAL SEA ICE PREDICTIONS



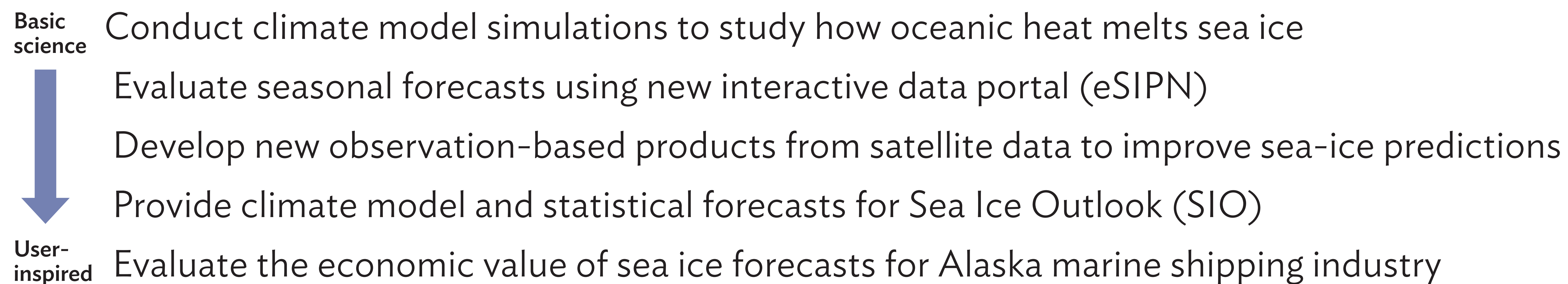
## A network linking scientists and stakeholders

Sea Ice is changing and many different groups need reliable forecasts of sea ice conditions for timeframes ranging from the next two days to six months from now. The Sea Ice Prediction Network (SIPN<sup>2</sup>) takes the best science available based on computer model forecasts to make products that are useful for Alaska stakeholders. It also contributes to scientific advances needed to make more reliable and useful forecasts of sea ice. Communication between scientists and stakeholders is essential to identify products that meet needs and are possible based on the available science.

Arctic sea ice extent in millions of kilometers



## SPIN<sup>2</sup> does basic science to user-inspired research



UA is an AA/EO employer and educational institution and prohibits illegal discrimination against any individual: [www.alaska.edu/nondiscrimination/](http://www.alaska.edu/nondiscrimination/).

**Collaboration** This project is funded by the National Science Foundation and NERC (UK) to support work done by researchers at UAF, U. Washington, U. Colorado, U. New Hampshire, and University College London. There are numerous partners who contribute to this work from NASA, NOAA, Department of Energy, Office of Naval Research, University Catholique de Louvain and the Year of Polar Prediction.

